



PAVING GRAVEL PATHS AT SPORTS PARK PROPOSAL

Issue:

Several paths at the Sports Park associated with the soccer fields are still gravel and need to be upgraded to pavement. This was to be part of the last phase of the Sports Park construction in 2009 but was never completed. An accessible route to the northern soccer fields is required by the Delaware County ADA Transition Plan and ADA 2010 Sections 302.1 & 303.2, and Section 20.2.2 which note that the stone path system running along the perimeters of the sports fields is not firm and stable, and has irregular vertical changes. Additionally, the perimeter walk system does not connect to the curb adjacent path. This new path system will connect to the accessible entry point from the parking lot which has already been made ADA compliant.

Proposal:

E&B Paving and LTB Construction both submitted quotes to remove the gravel from these paths and upgrade to HMA surface. E&B Paving submitted the low bid.

Cost:

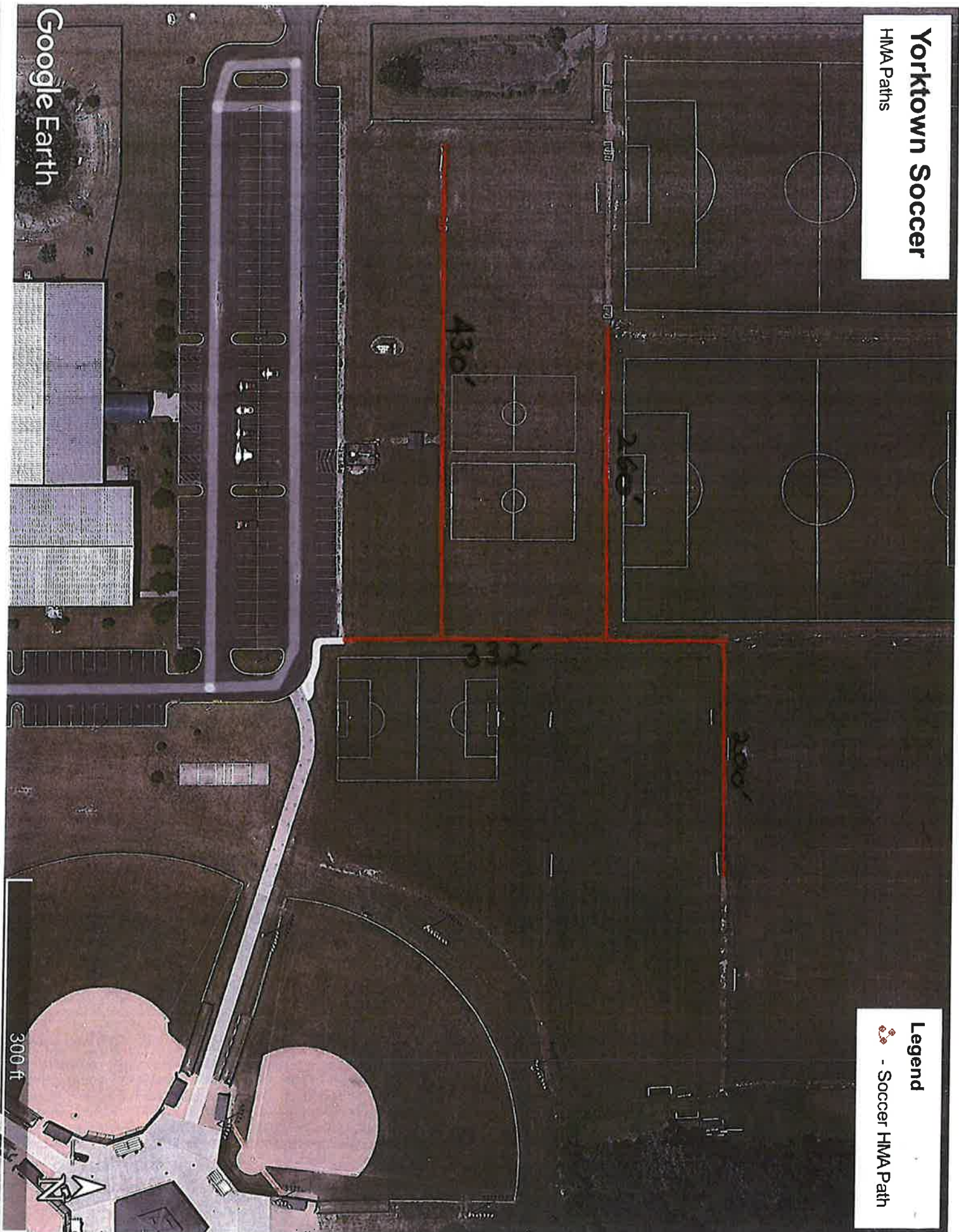
\$75,165.00

Cost to be paid from Park 2023 budget.

Yorctown Soccer

HMA Paths

Legend
- Soccer HMA Path



Google Earth

300 ft