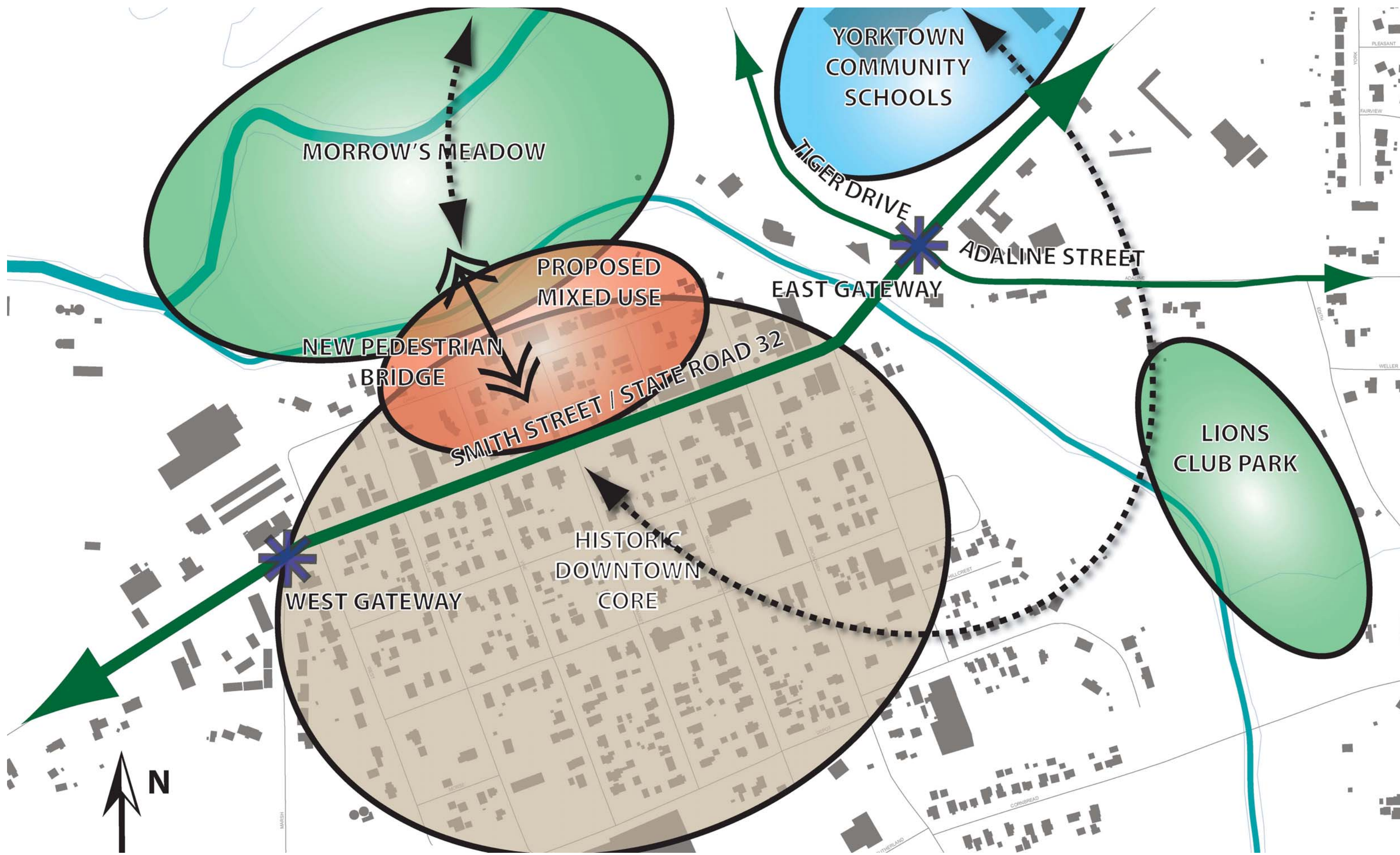
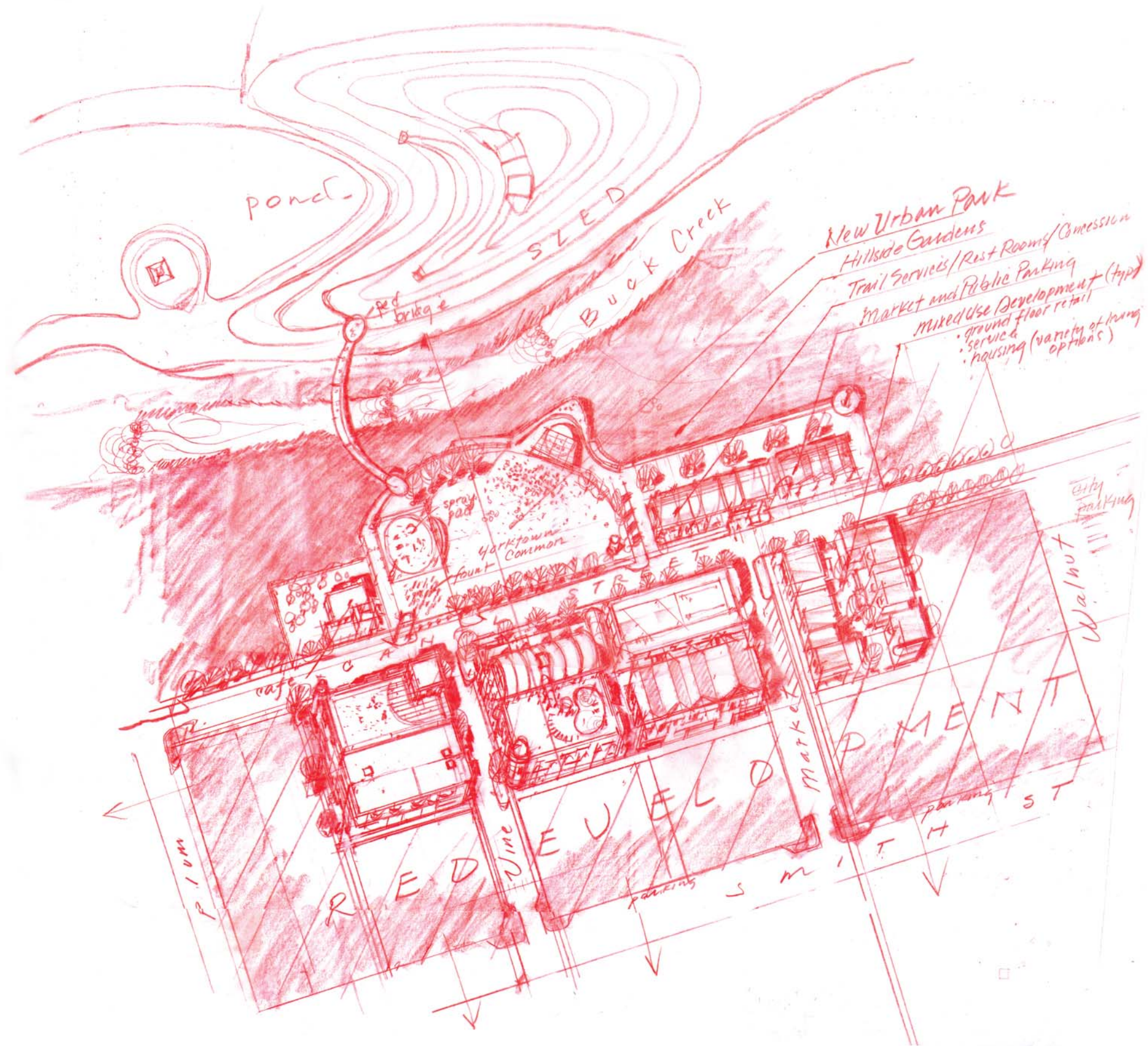


Yorktown Downtown Improvements
Town of Yorktown, Indiana - August 2014



Yorktown Downtown Improvements
 Concept Diagram - August 2014



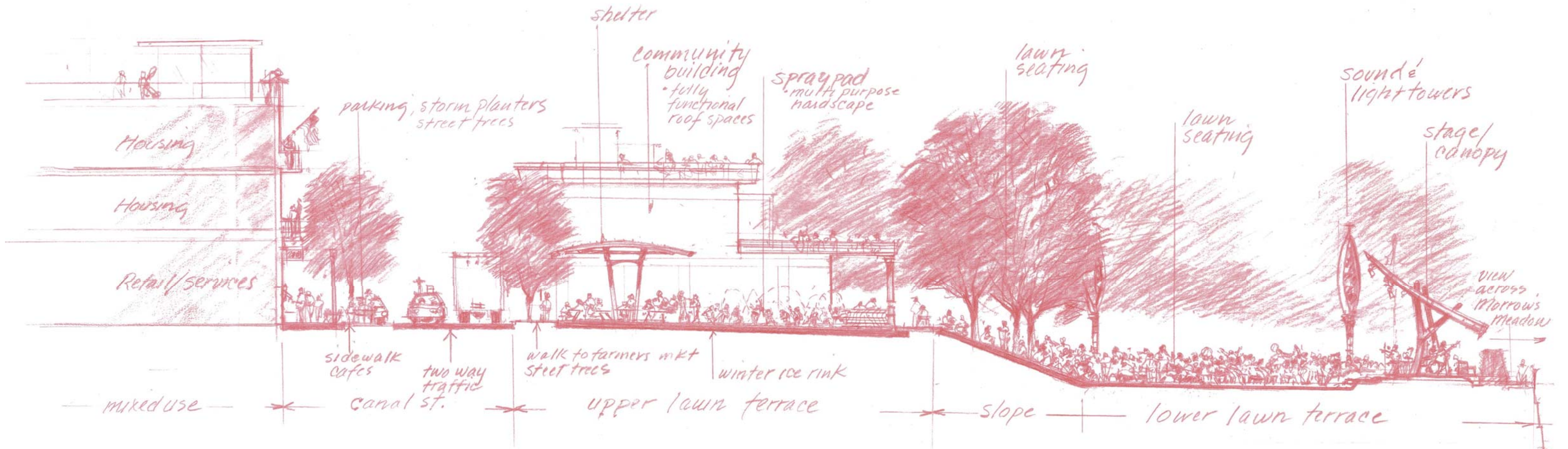
Yorktown Downtown Improvements
 Conceptual Sketch - August 2014

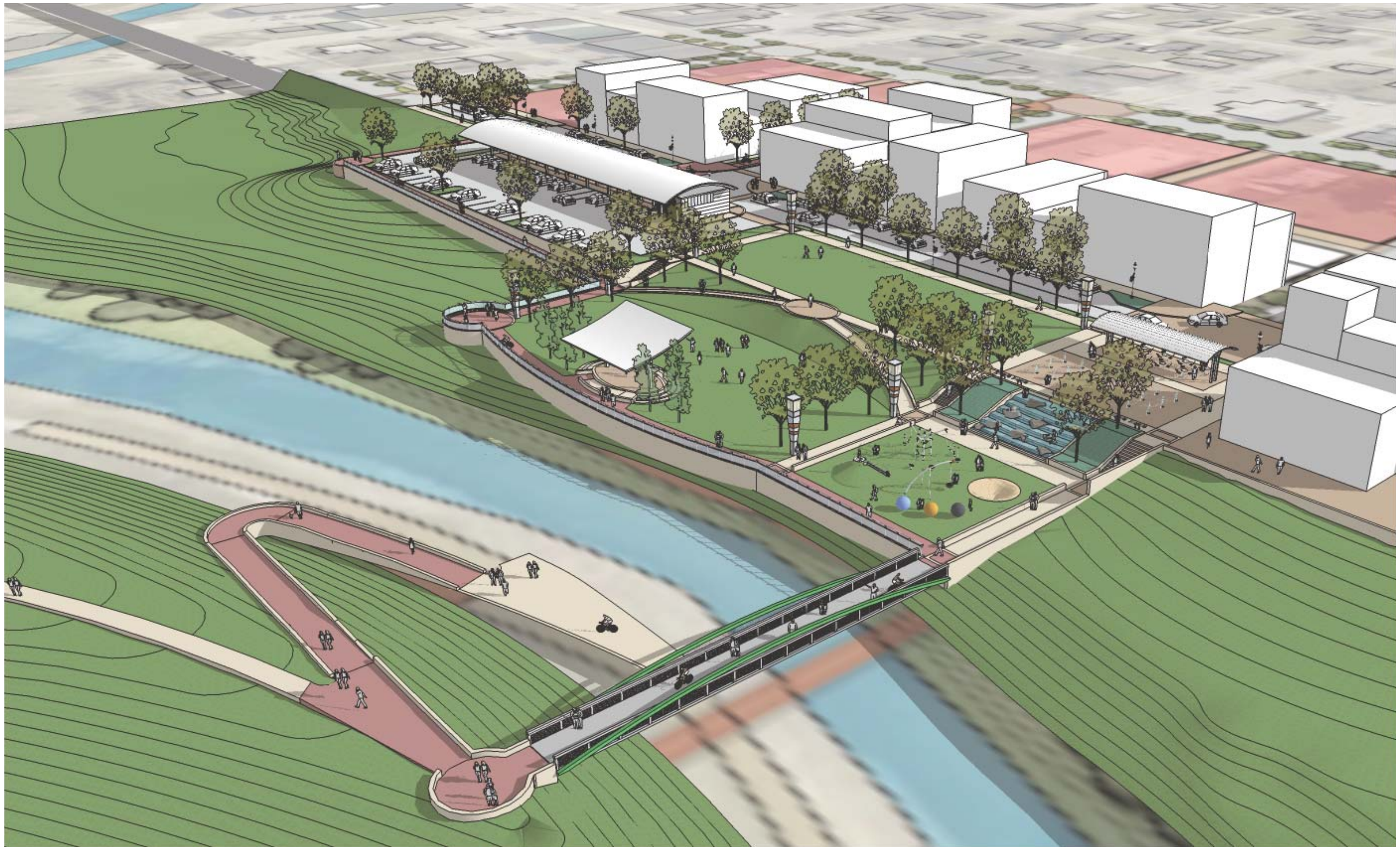


LEGEND

- 1 Mixed Use Redevelopment/ Land Acquisition
- 2 Commercial Building Infill
- 3 Upgraded Streetscape
- 4 Dedicated Cycle Path
- 5 Public Parking
- 6 Park Cafe
- 7 Farmer's Market Structure
- 8 Performance Pavilion
- 9 Park Shelter
- 10 Pedestrian Bridge
- 11 Upper Lawn Terrace/ Winter Ice Rink
- 12 Lower Lawn Terrace
- 13 Amphitheater
- 14 Spray Plaza
- 15 Interactive Water Feature
- 16 Play Area
- 17 Sledding Hill
- 18 Excavated Pond Feature
- 19 Pond Shelter

North
 0' 30' 60' 120'

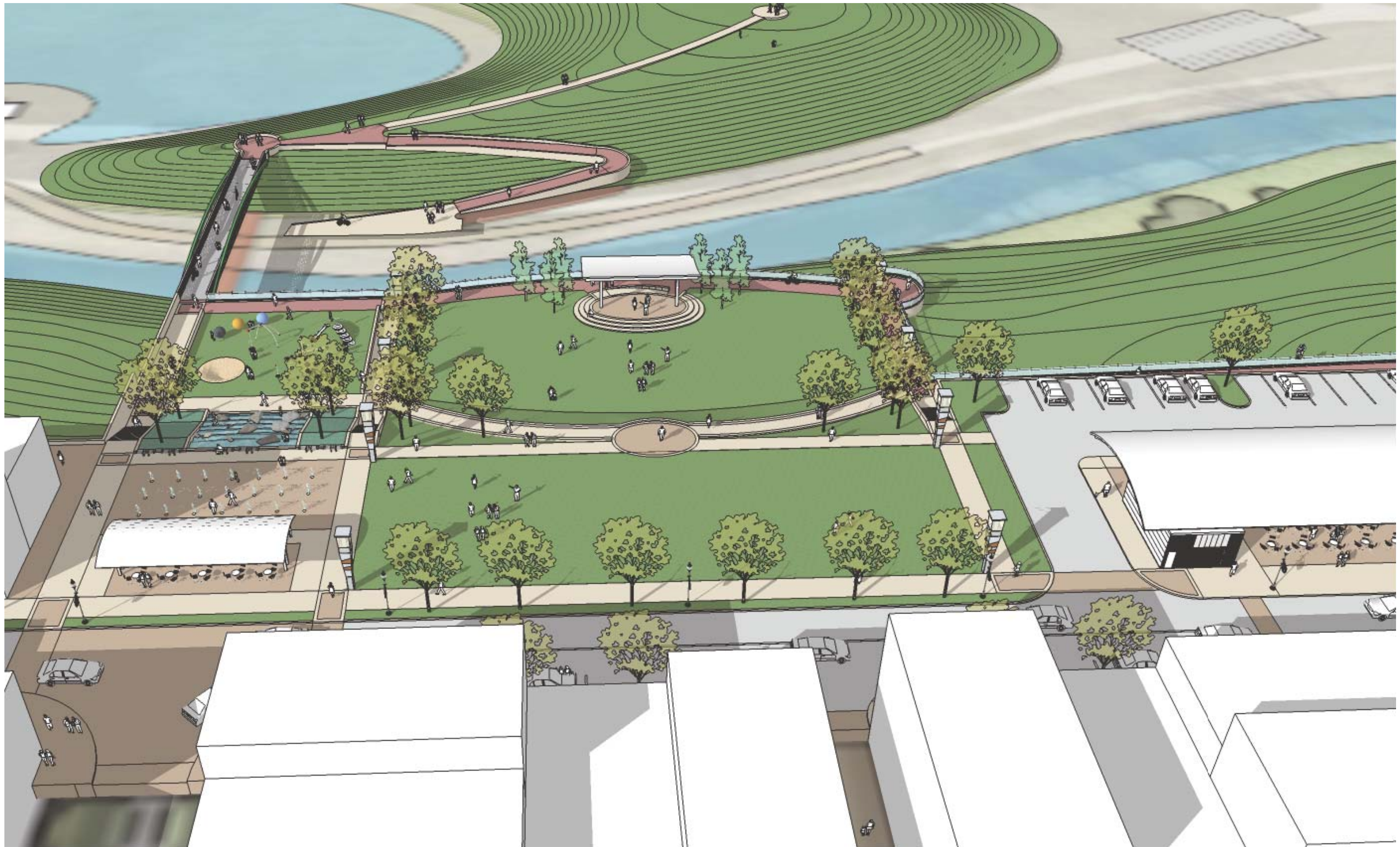




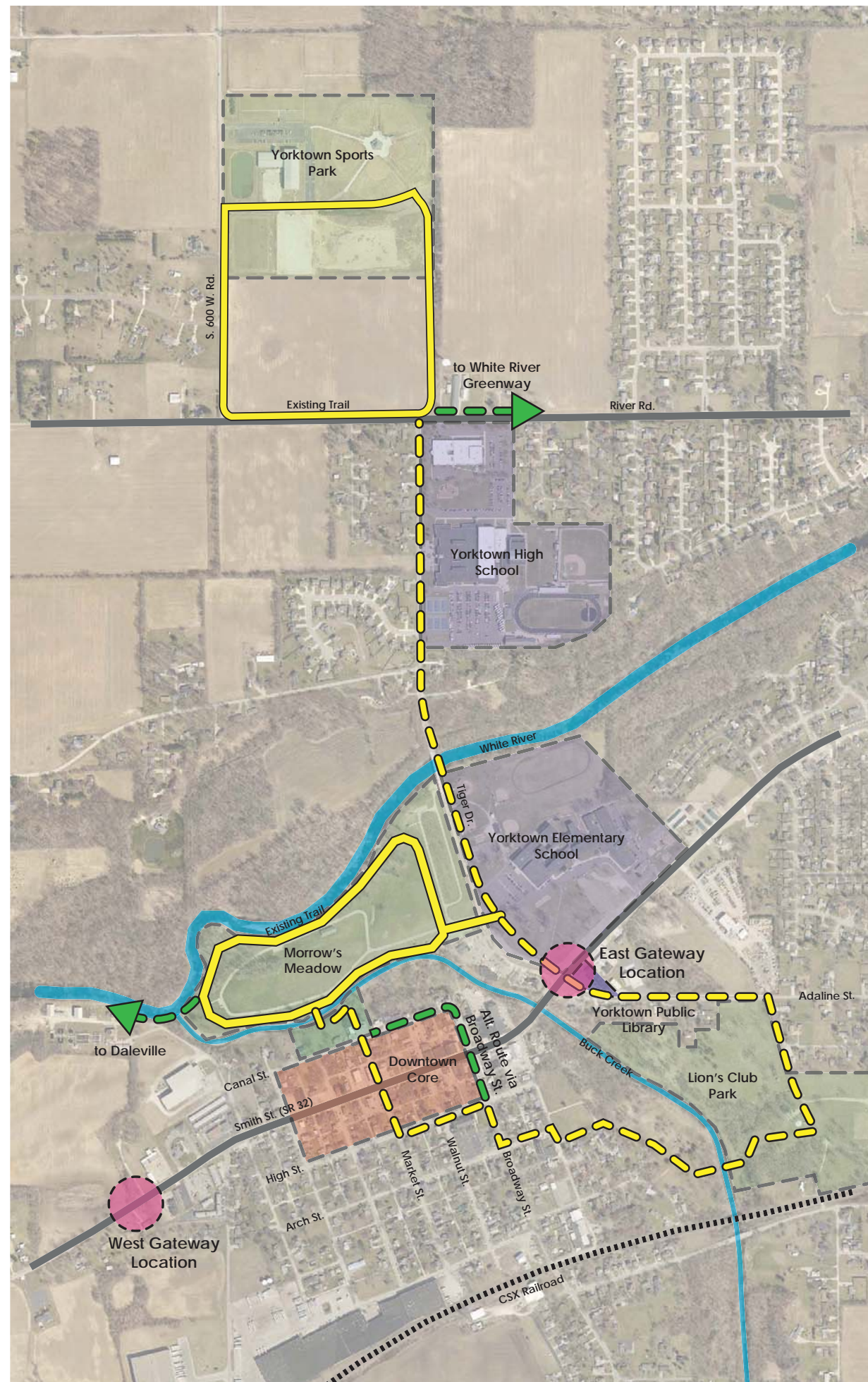
Yorktown Downtown Improvements
View Towards Park from the Northwest - August 2014

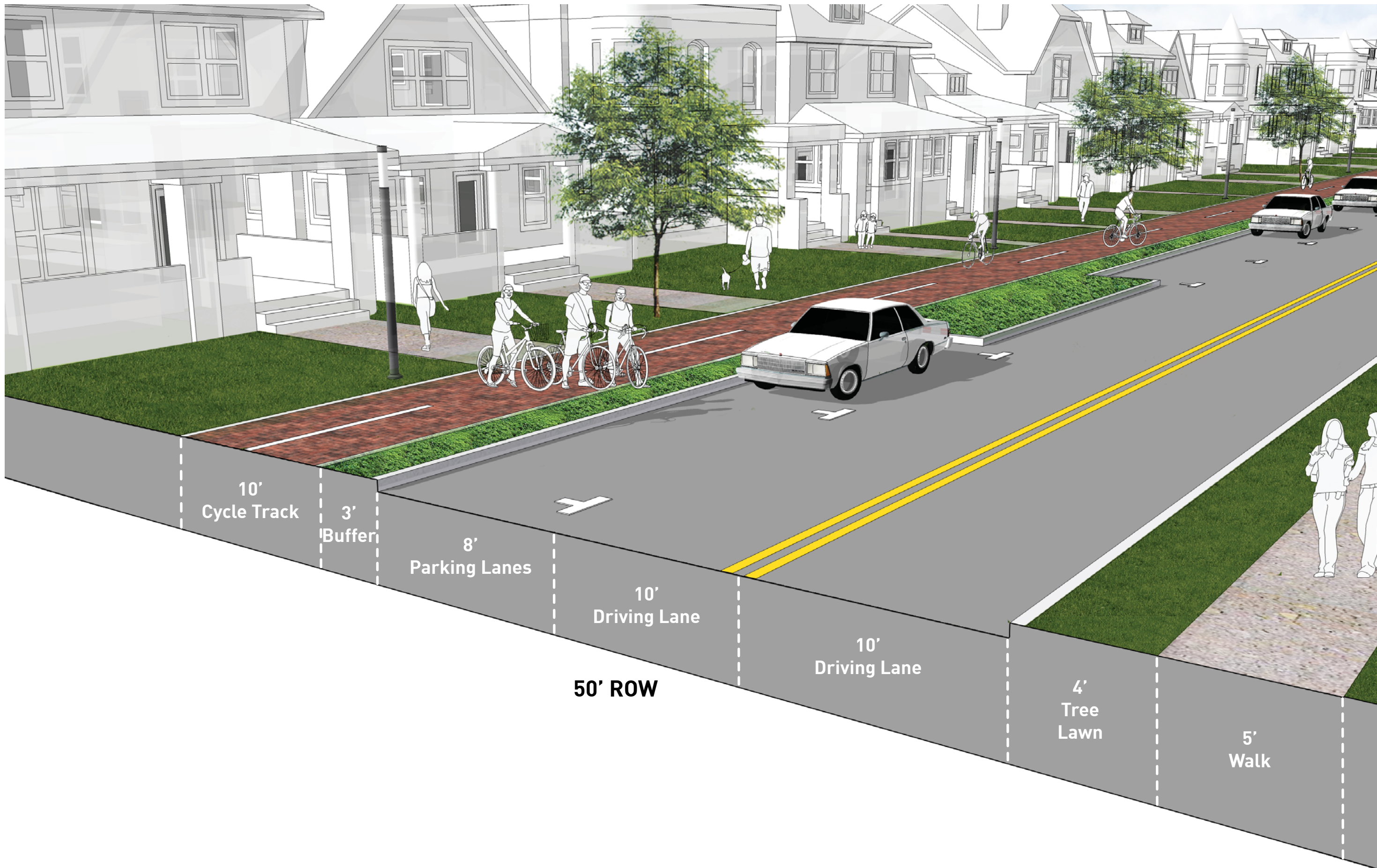


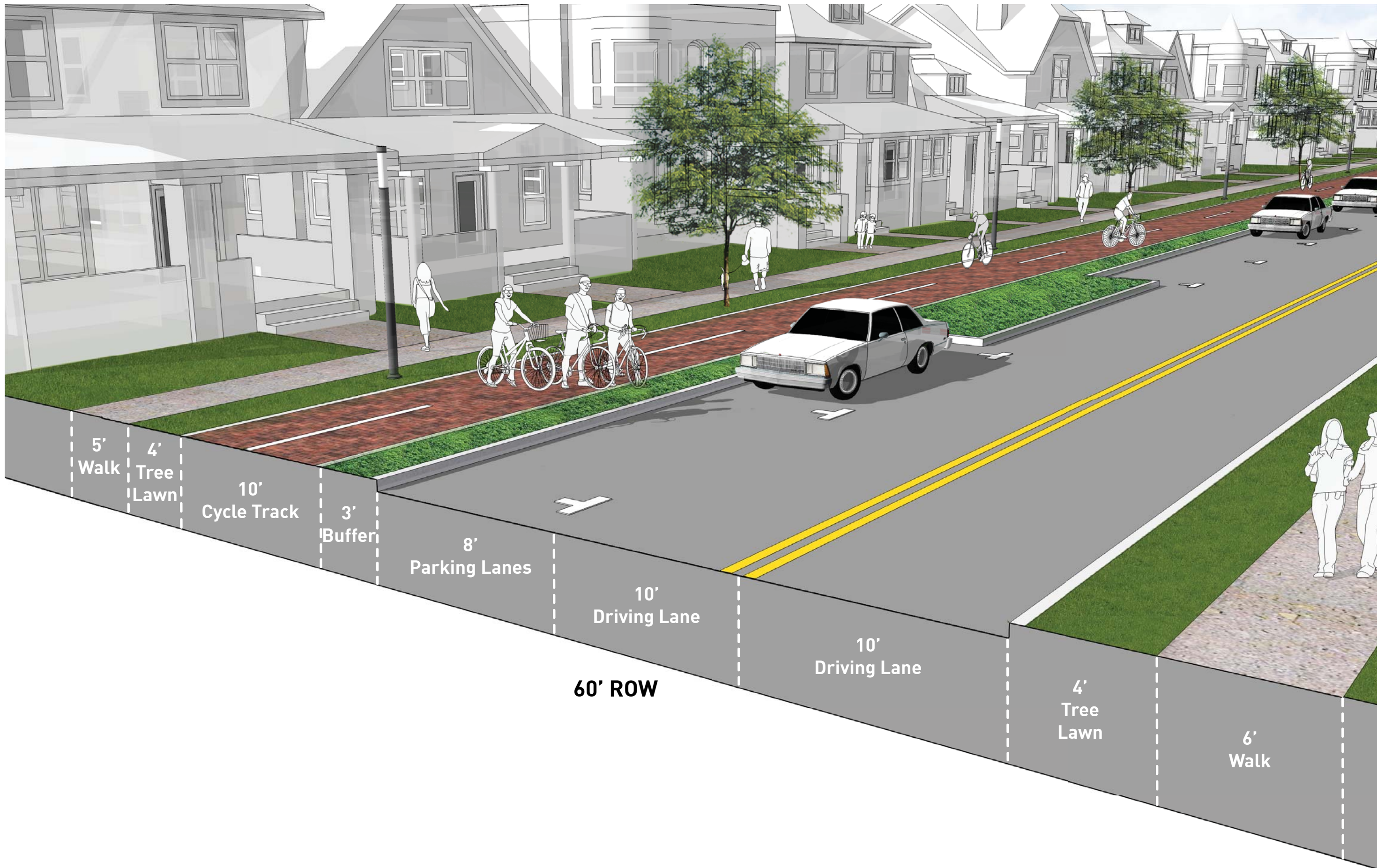
Yorktown Downtown Improvements
View Towards Park from the Northeast - August 2014



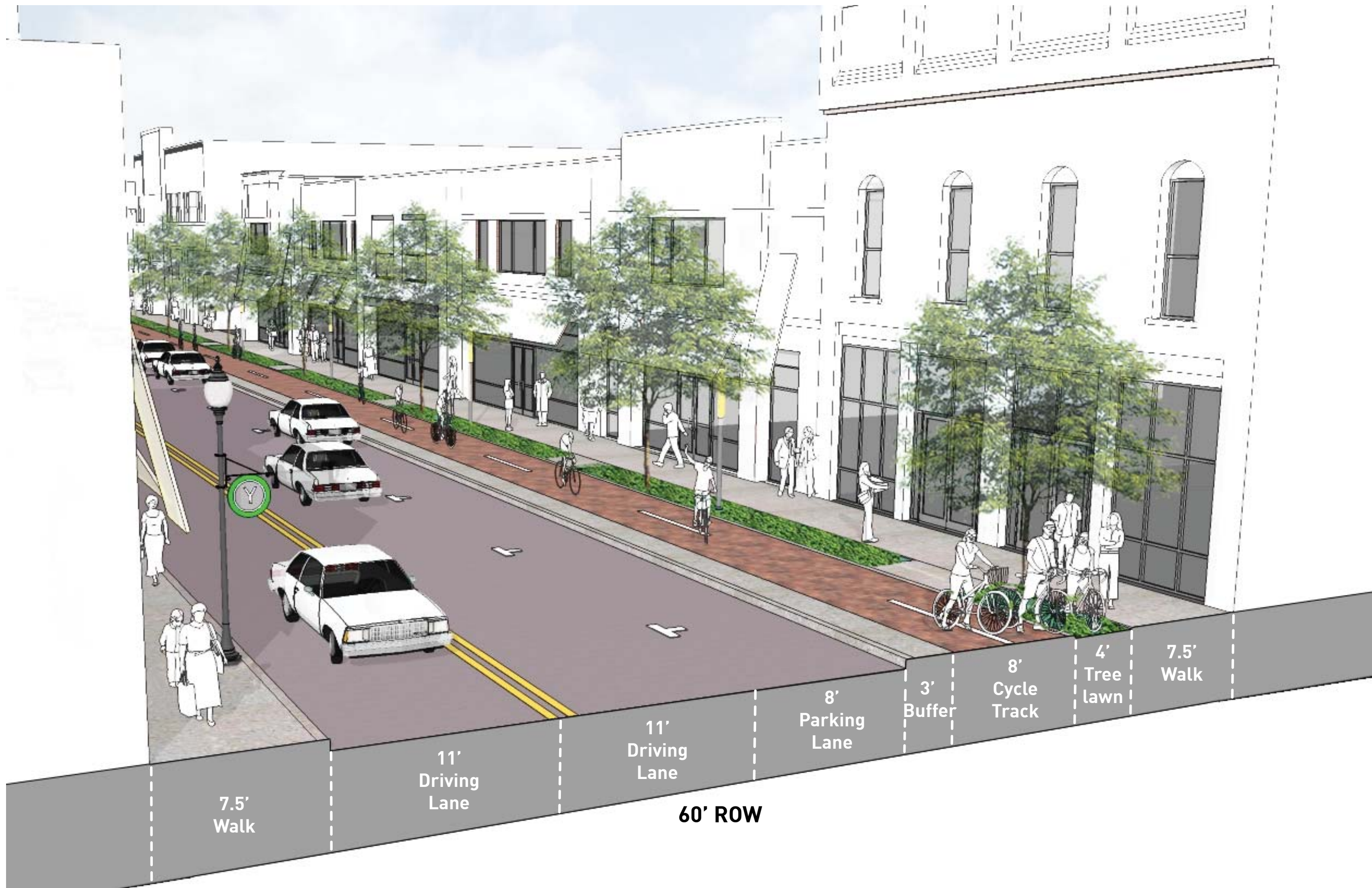
Yorktown Downtown Improvements
View Towards Park from the South - August 2014

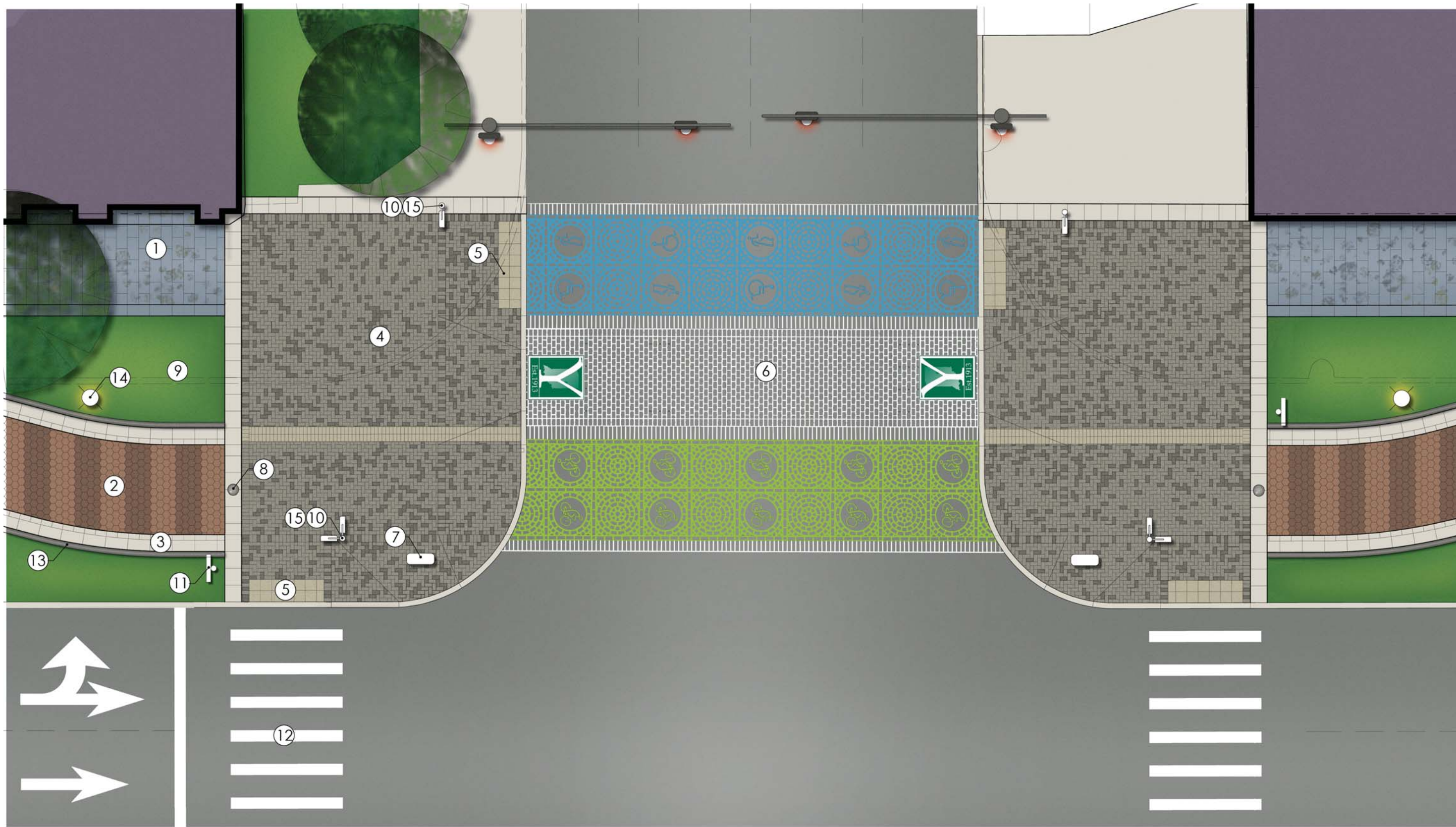












- 1 Slateface Concrete Paver
- 2 Asphalt Paver
- 3 Cast-in-Place Concrete
- 4 Pressed Concrete Paver

- 5 ADA Domed Paver
- 6 Duratherm
- 7 Bollard
- 8 Medallion

- 9 Plant Bed
- 10 Pedestrian/Bike Signal
- 11 Stop Sign
- 12 Thermoplastic

- 13 Plant Bed Rail
- 14 Trail Light Fixtures
- 15 Audible Signal Push Button



Yorktown Downtown Improvements
Downtown Gateway Locations - August 2014



Yorktown Downtown Improvements
West Gateway - August 2014



Yorktown Downtown Improvements
West Gateway - August 2014



Yorktown Downtown Improvements
East Gateway - August 2014